



# Major Projects at PORTS

## X-330 D&D *(Decontamination & Decommissioning)*

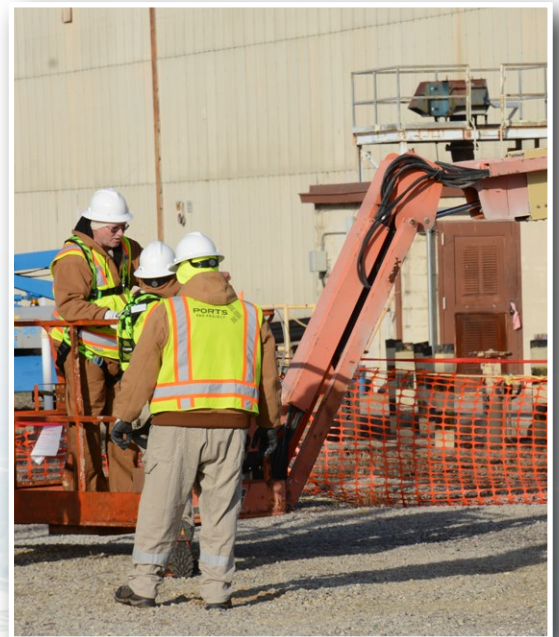
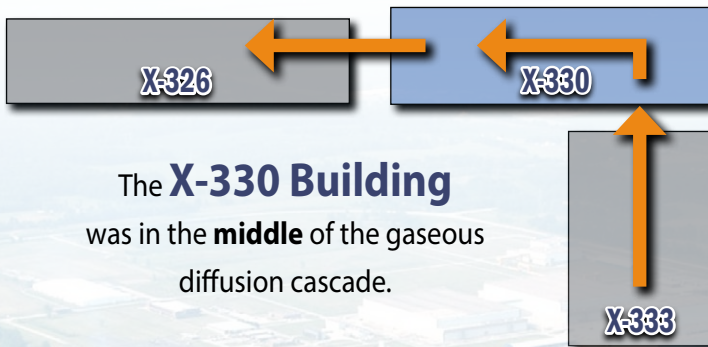


### Accelerated planning

is underway in the X-330 for future deactivation work once Deactivation is completed in X-333.

The X-330 will be **the last of the three large process buildings to be demolished.**

The X-330 Process Building is currently being used **to support deactivation work** in the X-326 and X-333.



The **X-330 Building** is approximately **1/2 mile long.**

**One Half Mile** • 880 Yards • 2,640 Feet • 7 Football Fields

