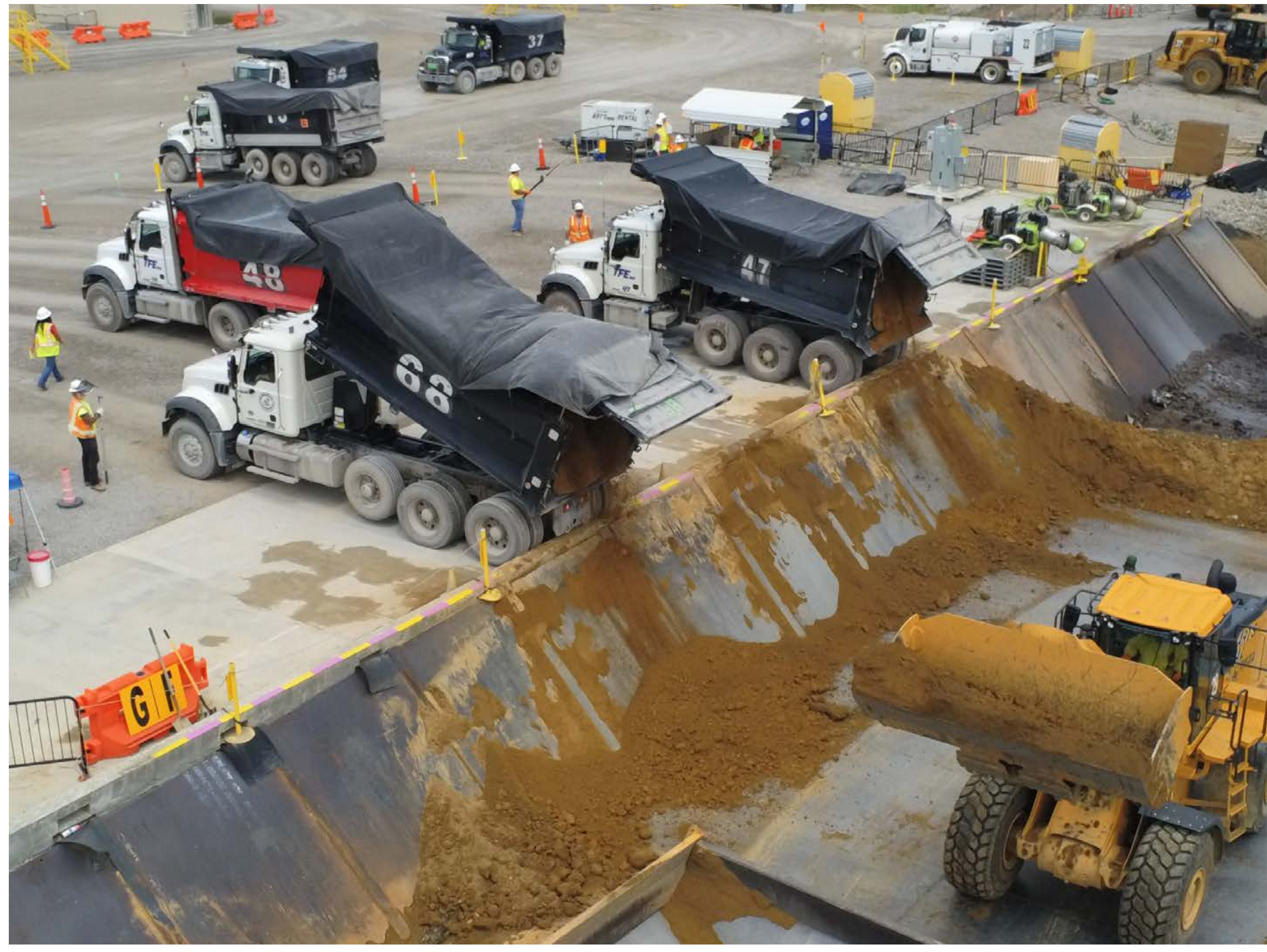


# OSWDF Operations

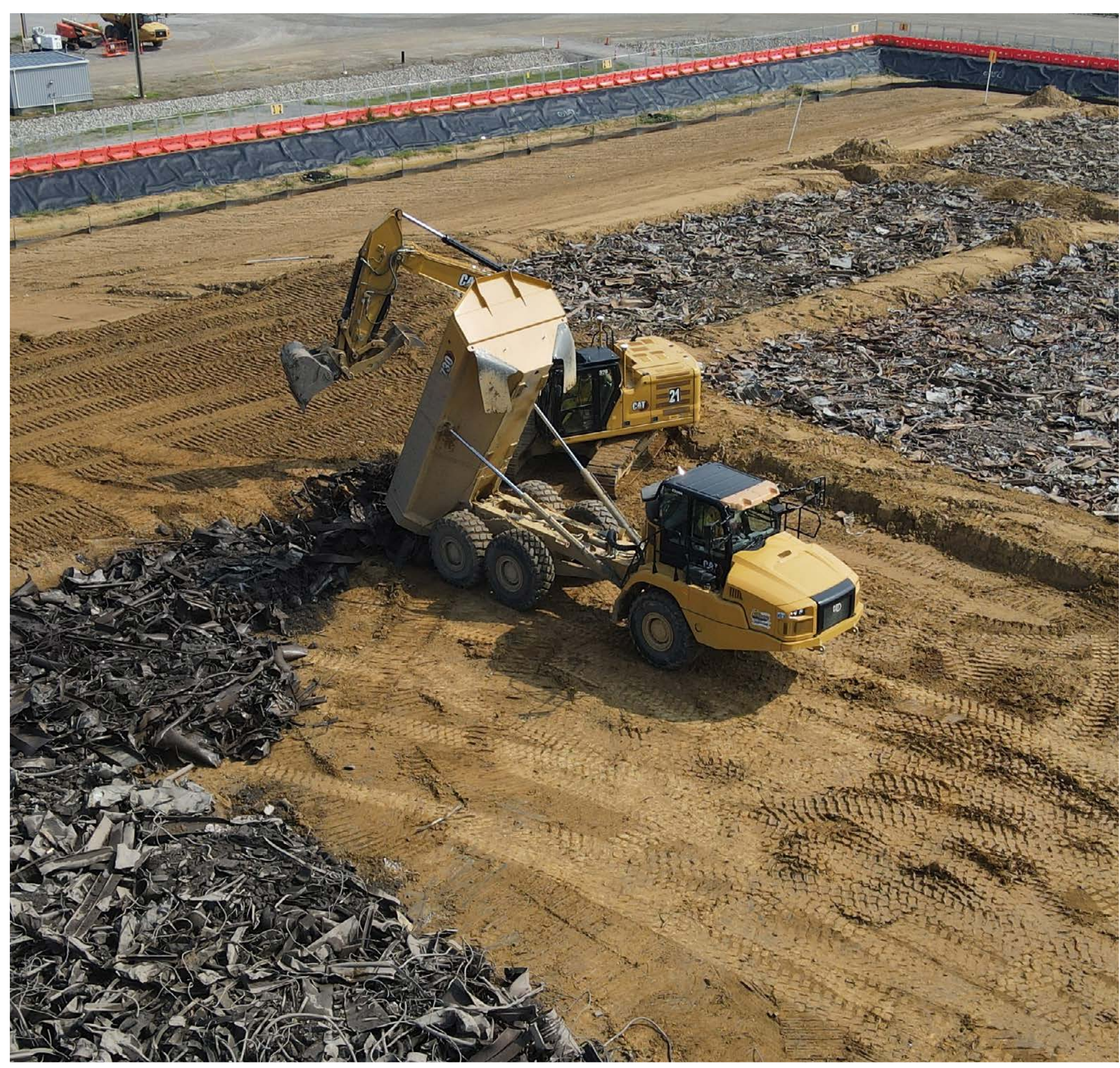


- 58,087 truckloads of soil and debris have traveled nearly 371,500 miles on haul road.

- Around 563,000 cubic yards of soil and debris placed to date.
- Improved cell utilization in 2023 by 30%:
  - 2022 Soil: Debris Ratio – 2.37
  - 2023 Soil: Debris Ratio – 1.63



- First 3 disposal cells, units 1, 4 & 5, are 86% filled with remaining 80,000 yd<sup>3</sup> scheduled to be completed this year.



- Improved cell utilization in 2023 by 30% by improving ratio of soil to debris placed with better planning and placement strategy

