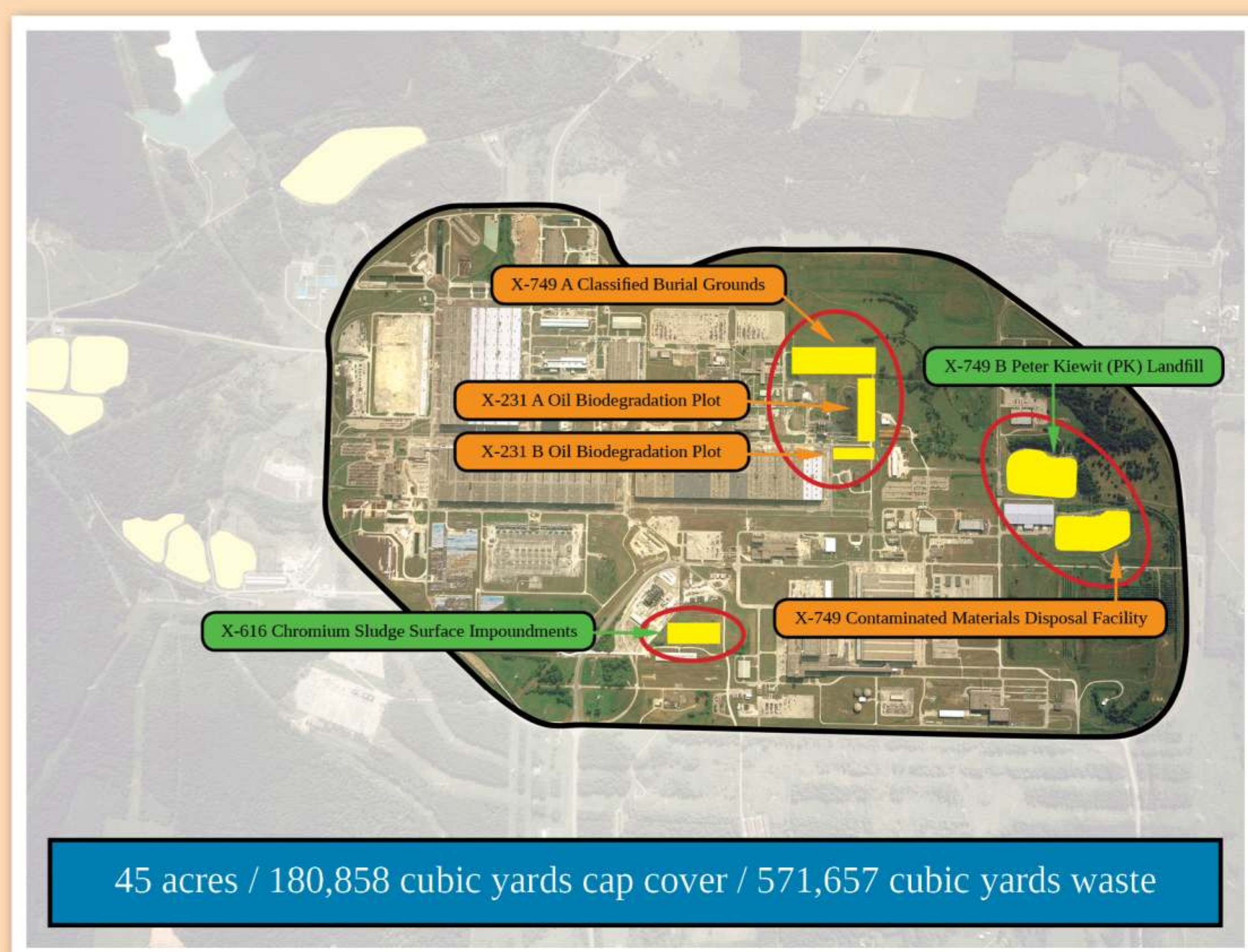




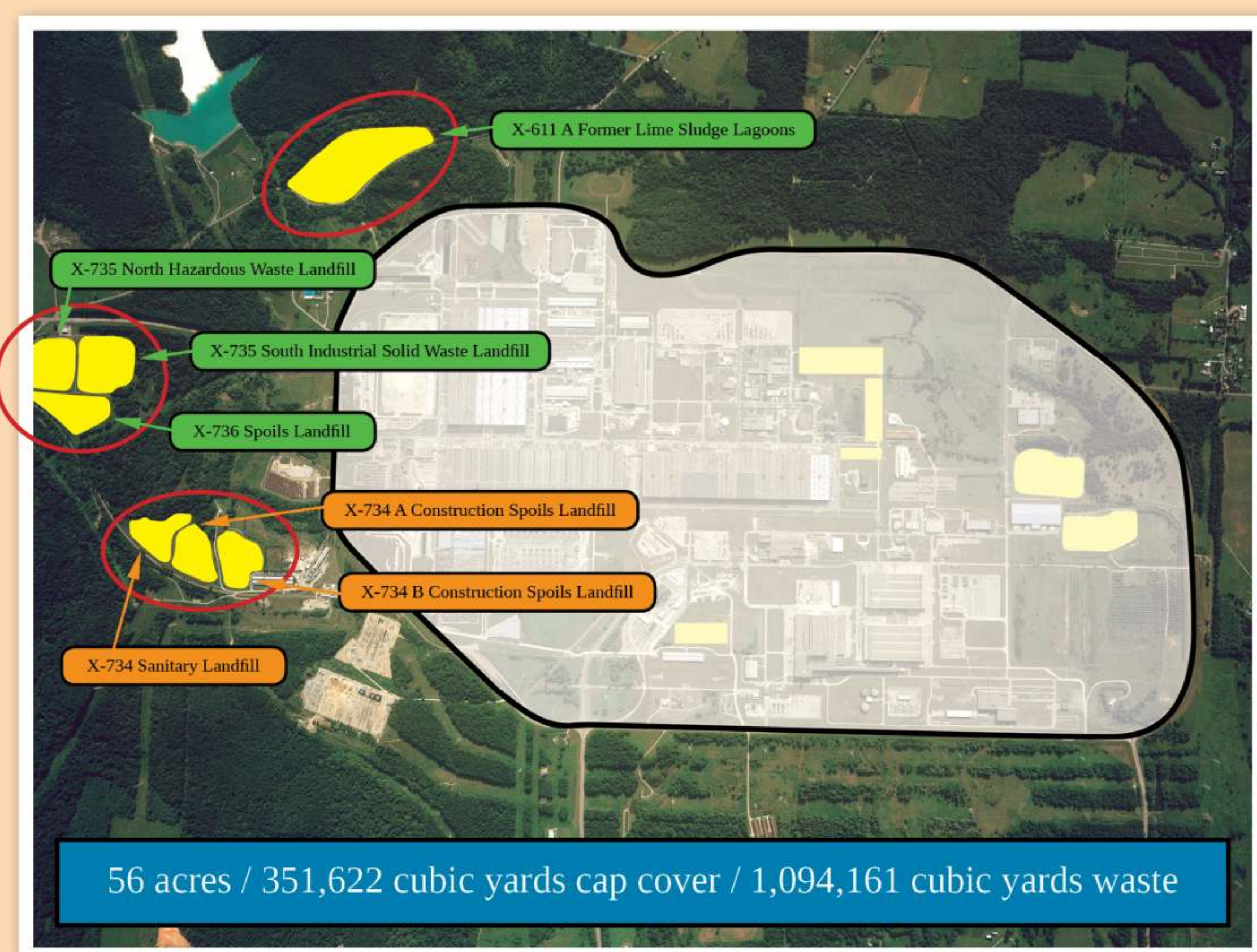
# CURRENT SITE CONDITIONS

## Closed Landfill Disposal Areas

### Inside Perimeter Road



### Outside Perimeter Road



Contains Radiological Materials  
 Contains Non-Radiological Materials

Information compiled for PORTS SSAB use by Fluor-B&W Portsmouth, LLC

## Landfill Disposal Areas Assessment

- Six general areas.
  - » 3 inside Perimeter Rd. and 3 outside Perimeter Rd.
  - » Approximately 101 acres
  - » 532,480 cubic yards of Cap
  - » 1,665,818 cubic yards of Waste
- No further action is required.
- Regulatory requirements have been met.
- Surveillance and Maintenance is ongoing.
- Upgradient and downgradient groundwater monitoring programs are in place at each landfill.

**OUR SITE.  
OUR FUTURE.**

