



Major Projects at PORTS

Property Transfer to Community for Reuse/Reindustrialization

Two years after **80 acres** of developable land on the Portsmouth DOE site (Parcel 1) was given to the community, an additional **227 acres** (Parcel 2) is scheduled for transfer in 2020.

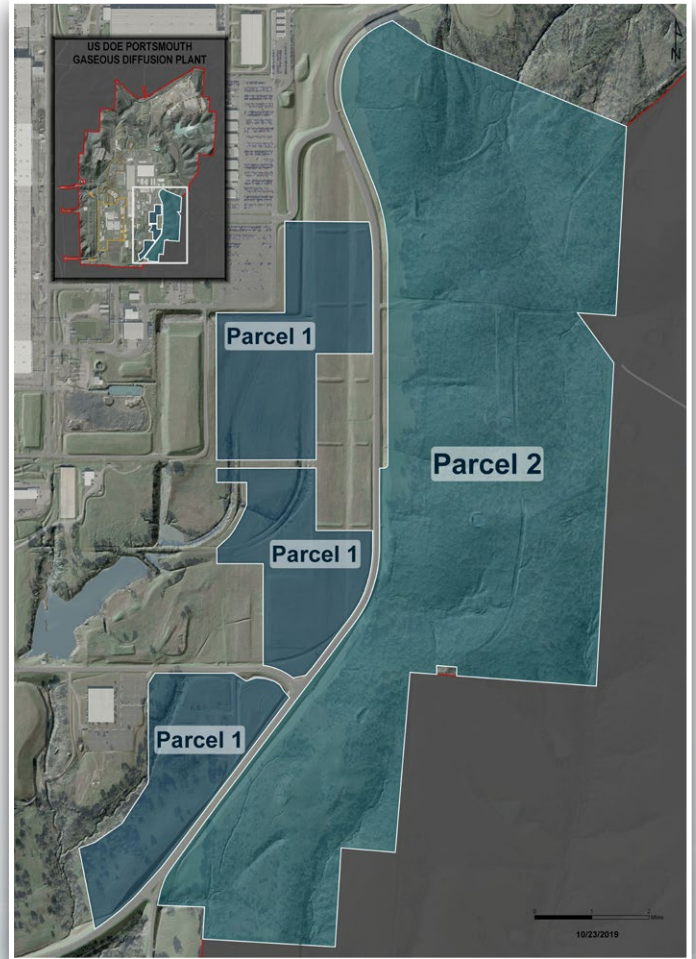


On July 20, 2018 DOE transferred the first 80 acres (Parcel 1) to the

Southern Ohio Diversification Initiative (SODI),

DOE's recognized Community Reuse Organization at Portsmouth.

SODI is working with private and publicly owned companies who have an interest in redeveloping portions of the site.



Environmental Assessment (EA)

was conducted in early 2017 to analyze potential environmental consequences associated with the transfer of land. The draft EA was made available to the public for review and comment.

A Finding of No Significant Impact, FONSI was announced in July 2017 by DOE.

