



Major Projects at PORTS

Property Transfer to Community for Reuse/Reindustrialization

This process will pave the way for additional transfers in the future as additional parcels are cleaned up and made available to the community for reuse.

On July 20, 2018 DOE transferred Parcel 1 to the **Southern Ohio Diversification Initiative (SODI)**,

DOE's recognized Community Reuse Organization at Portsmouth.

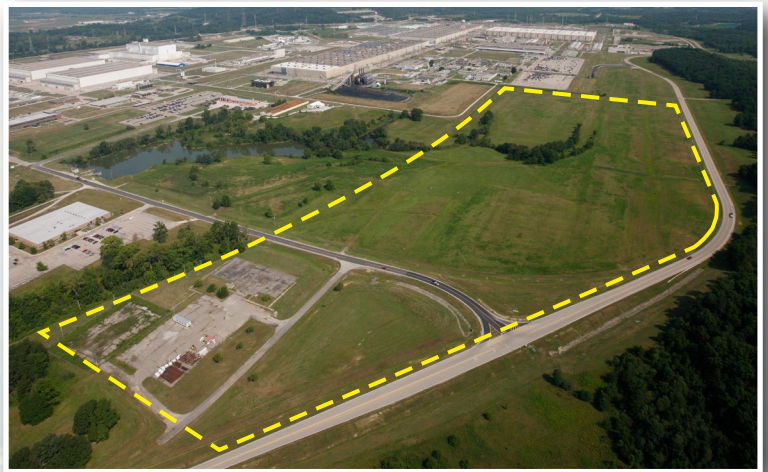
80-acre parcel

on the east side of the reservation, known as Parcel 1, was identified for potential reuse by private industry.

This is the **first** such property at Portsmouth to be turned back over **to the community**.



is working with private and publicly owned companies who have an interest in redeveloping portions of the site.



Environmental Assessment (EA)

was conducted in early 2017 to analyze potential environmental consequences associated with the transfer of land. The draft EA was made available to the public for review and comment. A Finding of No Significant Impact, FONSI was announced in July 2017 by DOE.

